

# RECON PRO

## ARTICULATING VIDEO BORESCOPE



OLED Display

Responsive Touchscreen

1080p Imaging Capability

64GB SD Card,  
HDMI and USB  
Connectivity

Military-Grade  
Durability

Built-In Speakers

4-way 360\* Power-Glide  
Joystick Articulation

Intuitive Single-Use  
Buttons

Interchangeable Probe System

Tungsten Braided  
Insertion Tubes

Ergonomic Pistol Grip Design

5 Levels of  
LED illumination

Rechargeable Li-On Battery

5X Digital Zoom

Wrist & Shoulder  
Straps

Rubber Grip & Magnetic Base

Made By

**SPI BORESCOPIES**  
&  
INSPECTION TECHNOLOGIES

# HIGHLIGHTED FEATURES (1/2)



## True Interchangeable Probe System

Change probes in under one minute to conduct a variety of inspections with a single base unit or swap broken probes immediately to keep your inspections uninterrupted.

## Custom Probe Kits

Choose from more than 15 probes, camera types, lengths, diameters, and accessories to include in your inspection kit to navigate any inspection with confidence. We also offer custom probe manufacturing for specialized requirements.

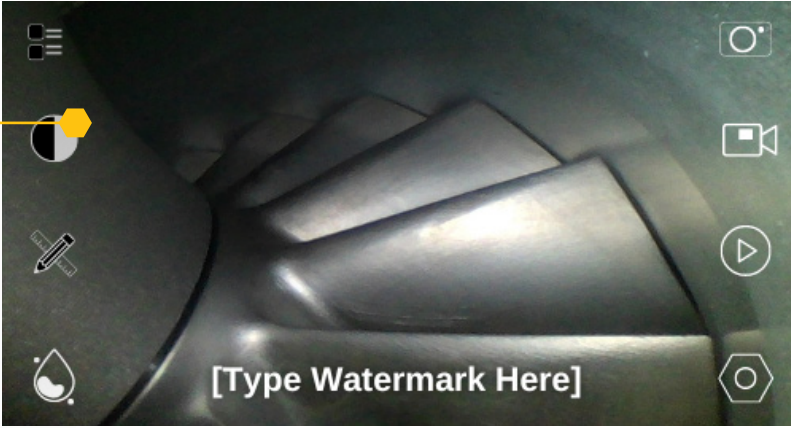


## Improved Articulation

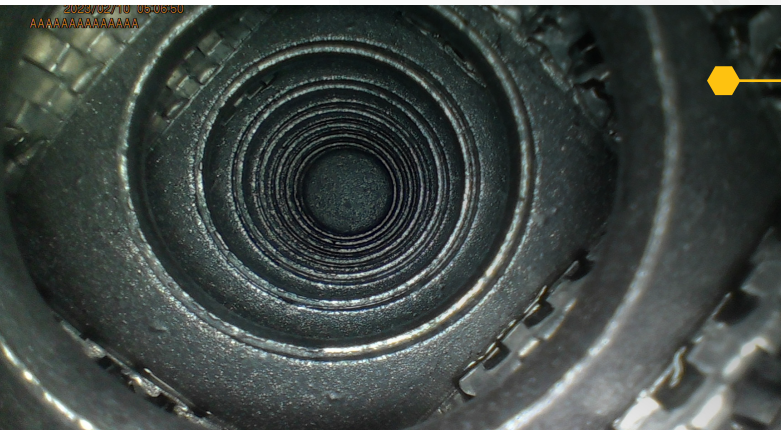
New and improved direct drive articulation performance has increased the durability, movement response, and range of articulation of our probes

## OLED Touchscreen

Tag your images and access the functions of the Recon Pro easily and view your inspections with the clarity of OLED technology.



## HIGHLIGHTED FEATURES (2/2)

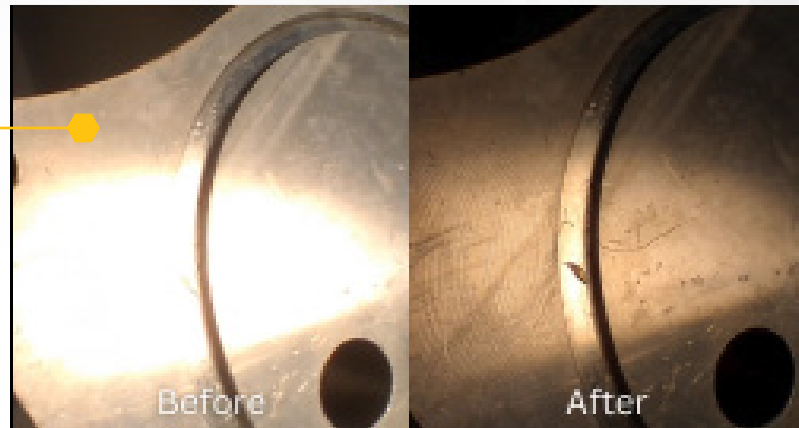


### HD Image Quality

The Recon pro has the ability to deliver an astonishing (1800 X 1088) 1080p HD image

### 4 -Image Enhancement Settings

Choose one of four intuitive image enhancement settings to view your inspections more clearly (Strong Light Suppression Pictured)



### What's Included:

- Recon Pro Borescope
- Hard-Shell Borescope Case
- One Set Of Li-Ion Batteries
- Battery Charger And Adapter Cord
- 64gb Sd Card
- Multi-Function Sd Card Adapter
- Iphone/Android Sd Card Adapter
- Spi Cleaning Kit
- Ac Power Adapter
- Hdmi Cable 3ft
- Microfiber Cleaning Cloth
- Shoulder Strap For Recon Unit
- Detachable Strap For Hard-Shell Case
- User Manual

## THE BEST USE SPI



SIEMENS



## THE SPI DIFFERENCE



### Swap and Repair Program

Keep your inspections uninterrupted with our probe swap and repair program. Send in your broken probes and immediately receive a new one without having to replace your unit.



### Free Demo

Try before you buy! Simply Call-in to schedule a no cost demo and receive a unit to test on site and see why the best use SPI.



### Discounts on Multiple Probes

SPI provides discount pricing on industry specific kits and custom probe packages to help reduce your inspection costs.



### Immediate assistance

Our inspection specialists are always ready to accept your call and provide you with all the answers and assistance you need.



## RECON PRO TECHNICAL SPECIFICATIONS

RECON PRO TECHNICAL SPECIFICATIONS										
Insertion Tube	Outer Diameter	1.8mm	2.0mm	2.4mm	2.8mm	3.9mm	6.2mm	6.4mm Dual-View	8.4mm	
		Forward Only	Forward   Sideview	Forward Only	Forward   Sideview	Forward   Sideview	Forward   Sideview	Forward   Sideview	Forward   Sideview	
	Length	1.5 Meters	1.5 Meters	1.5 Meters	1.5 Meters	1.5/3 Meters	1.5/3 Meters	2M	1.5/3 Meters	
	Image Sensor	CMOS1/18	CMOS1/18	CMOS1/18	CMOS1/18	CMOS1/4	CMOS1/6	CMOS 1/9	CMOS1/6	
	Resolution / Pixels	160,000	160,000	160,000	160,000	864,000 (720p)	1,954,400 (1080p)	864,000 (720p)	1,954,400 (1080p)	
	Depth of Field	2mm-50mm	2mm-50mm	2mm-50mm	2mm-50mm	4m-80mm	6mm-Infinity	4mm-80mm	6mm-100mm	
	Field of View	>120	>120	>120	>120	>120	>120	>120	>120	
	Viewing Angle	0°	0°   90°	0°   90°	0°   90°	0°   90°	0°   90°	0°   90°	0°   90°	
	Illumination Output	>3K Lux	>3K Lux	>3.5K Lux	>5K Lux	>20K Lux	60K Lux	18K Lux	70K Lux	
	Articulation	No	2-Ways	2-Ways	4-Ways	4-Ways	4-Ways	4-Ways	4-Ways	
	Interchangeable	Yes	yes	Yes	Yes	Yes	Yes	Yes	Yes	
	Exterior Material	Stainless Steel	Stainless Steel	Stainless Steel	Stainless Steel	Tungsten Braid	Tungsten Braid	Tungsten Braid	Tungsten Braid	
Water Resistance	IP65	IP65	IP65	IP65	IP65	IP65	IP65	IP65		
Base Unit	Display	Multi Touch			Software	Operation System	RTOS Multitasking Operating System, touch/menu Operation			
	Screen Size	5.4"				Image Control	4 Levels			
	Resolution	1920x1080				Image Format	JPG 1200x720/1800x1920			
	Screen Brightness	1000 CD/m²				Image Resolution	MOV 1200x720/1800x1920			
	Screen Contrast Ratio	1500/1				Software Update	Upgrade Via USB Upgrade package			
	Display Frame Rate	30 FPS				Language(s)	14			
	Articulation Control	Manual				White Balance/AGC/Exposure	Auto/Manual			
	Compatibility	Base Unit is Compatible With All Probes				Image Capture	10			
	Output Interface	HDMI/AV				Photos While Recording	Yes			
	USB Interface	Mini USB				Screen Rotate	Yes			
	System Running Memory	1.8 GB				LED Display Level	Yes			
	Light Type	LED				Image Rename	Yes			
	Lamp Life	10W Hours				Negative	Yes			
	Brightness Control	5 Levels				Screen ruler	Yes			
	Video Output	NTSC/PAL Output				Image Stamp Length	150 Characters			
	Audio	Built-in Speaker and Mic				Image Adjustments	Shadow Display/3D Noise Reduction/Image Enhance/Light Suppression			
	SD Card	64G (128G Option)				Durability	Probe Working Temperature	-4°F to 158°F (-20°C to 70°C)		
Power Supply	AC Power Input	AC 100-240V 50/60Hz 0.35A			System Operating temperature		-4°F to 158°F (-20°C to 70°C)			
	AC Power Output	8.4 2A			Storage Temperature		14°F to 122°F (-10°C to 50°C)			
	Lithium-ion battery	3.7V/5600MAH*2 26650			IP Rate	IP64				