

1425 N.W. 88th Avenue
Doral, FL 33172
Tel: 305-591-8935
info@ludeca.com
www.ludeca.com



LUDECA
Keep it running.



Sensoteq Kappa[®] Plant Maintenance System

Sensoteq Kappa[®] provides innovative machine health monitoring for industrial applications. Kappa combines a proprietary means of transmitting data with professional software and robust hardware for wireless condition monitoring analysis.



PUMPS



MOTORS

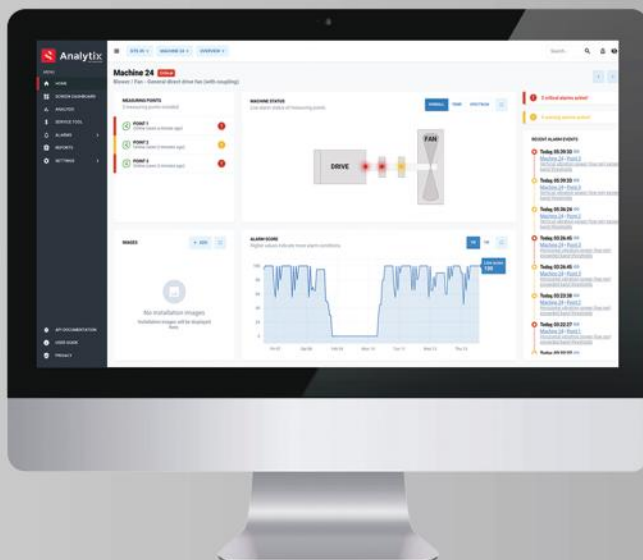
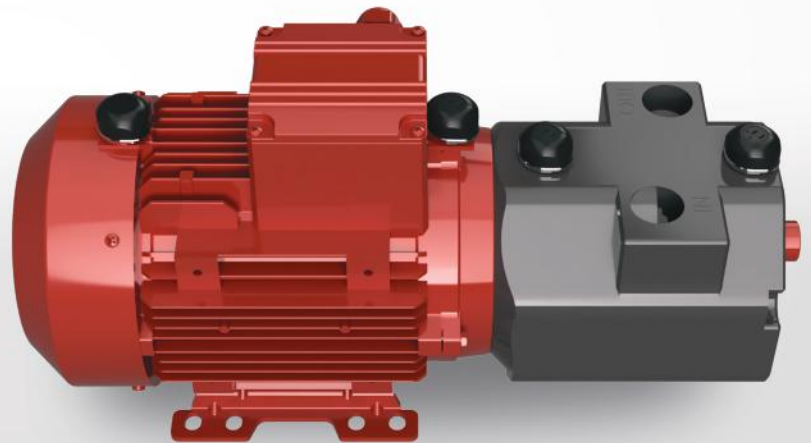


FANS

Sensoteq Kappa[®] wireless sensor system measures and transmits data every minute to ensure the most accurate diagnosis can be performed on your machinery for predictive maintenance purposes, not only reducing downtime & costs, but also increasing efficiency and extending your machines' life. Kappa is particularly useful in dangerous and difficult to reach locations.

The system identifies faults based on set limits which, if breached, alerts users via email or text that there is an issue.

Kappa is renowned for its powerful capabilities and used by vibration analysts worldwide.



Sensoteq Analytix[®]

Sensoteq Analytix[®] pioneers the user interface world when it comes to condition monitoring. Sleek, modern design meets powerful, advanced analysis and reporting tools to give you one of the most advanced platforms available.

View high level data with overall health rating. Dive deeper with full spectrum analysis, tracking harmonic peaks, bearing fault frequencies and side band amplitudes. Data trends allow for long-term projections. Generate and send graphs at the click of a button.

With new features and updates added quarterly, Analytix ensures you remain ahead of the game.

1425 N.W. 88th Avenue
 Doral, FL 33172
 Tel: 305-591-8935
 info@ludeca.com
 www.ludeca.com



LUDECA

Keep it running.

Kappa Wireless Sensor

Sensotek Kappa® sensors measure tri-axial vibration and temperature to produce an all-encompassing picture of machine health.

Kappa vibration sensing elements use **Smart Wake** to recognise when your machine is running. It only provides critical information required for accurate monitoring when in motion, extending battery life and producing more reliable results.

Kappa's proprietary sub 1GHz ISM band protocol allows the sensor to achieve a continuous connection to Analytix while maximising battery life.



Kappa Gateway

The Kappa Gateway provides an uplink from your plant to the Sensotek Analytix® cloud platform via Wi-Fi or cellular connection. The Kappa Gateway also serves as a sensor, monitoring and transmitting ambient temperature.

It listens for RF communications from the sensors, collates them into Wi-Fi protocol and communicates this data for viewing and analysis.

Kappa's proprietary sub 1GHz ISM band protocol relays long-range, stable transmissions effortlessly in high noise environments, ideal for large-scale plant installations.

Sensor Specifications

Detects

- ▶ Bearing Failure
- ▶ Mechanical Looseness
- ▶ Imbalance
- ▶ Misalignment
- ▶ Shaft and Bearing Wear
- ▶ Electrical Noise and Resonance

Key Measurements

RMS Velocity/Acceleration, Peak to Peak (Every 3 minutes)
 Acceleration Time Waveform (Every 12 hours)
 Spectrum (Acceleration, Velocity, Displacement)

2.5 kHz

Fmax (X, Y, Z)

16G

Vibration Limit (+/-)

IP69K/ATEX

Environmental Protection (ATEX Zone 0)

3+ Years

Battery Life

Gateway Specifications

Key Benefits

Proprietary RF Link Ensures Robust Data Connection
 Easy Install
 Small Form Factor

Compatibility

Sensotek Kappa and Sensotek Tau Sensors
 Sensotek Analytix Platform
 Sensotek Install App

250m

Wireless Range (Line of Sight)

WiFi

Connection to LAN

IP64/ATEX

Environmental Protection (ATEX Zone 2)

Cellular

Optional Connection