

EASY-LASER®

XT660



Alignment system for all important
steps of machine installation.

Shaft Alignment

XT660

MEASUREMENT INDEPENDENCE



EASY-LASER® GENERATION XT

Easy-Laser® XT660 is the second member of our Generation XT alignment systems, built upon our groundbreaking cross-platform technology. You can now display the data on a multitude of different handheld devices, giving you the freedom to work with the gear that suits you the best. Simply download our straightforward XT application for free and you have all the measurement programs you need.

NO LICENSE HASSLE

Your Generation XT measuring units determine what functions are available. The XT alignment app will always let you run whatever the Generation XT measuring units can do. No hassle with licenses to unlock new features in the app. If you have the hardware, you can use all of its capacity. That is straightforward!

MAXIMUM FLEXIBILITY!

The XT Alignment app runs on iOS and Android devices, as well as on the Easy-Laser® XT11 display unit. The choice is yours.*

**Conditions apply*

HIGHLIGHTS

MAXIMUM FLEXIBILITY



ALL XT PROGRAMS IN ONE FREE APP

All XT measurement programs included in one straightforward application available for free.



DISPLAY DATA ON MULTIPLE PLATFORMS

Functionality for iOS, Android and Easy-Laser® XT display units.



NO LOCK-INS

Buy with or without the new user-friendly Easy-Laser® display unit.



MAXIMUM FLEXIBILITY

Combine several measuring units with the display unit of your choice, or use different display units with one set of measuring units. No license hassle!



RUGGED DESIGN

The XT products are rugged, rated both IP66 and IP67 water and dust proof. For superior durability in harsh environments.



LONG OPERATING TIMES

The long operating times of up to 16 hours for the display unit and 24 hours for the measuring units means you will now be able to take on and finish the toughest jobs.



SEND THE REPORTS

Share the reports via email. Possible on all platforms.

XT660

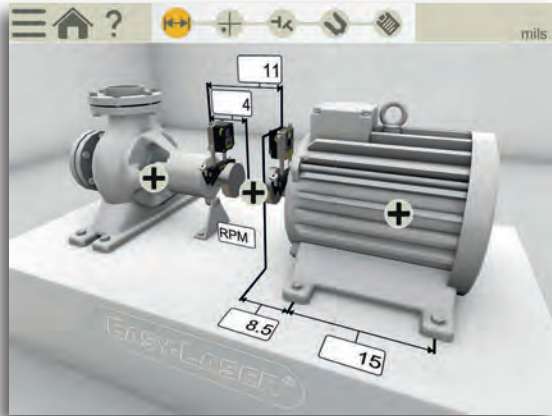
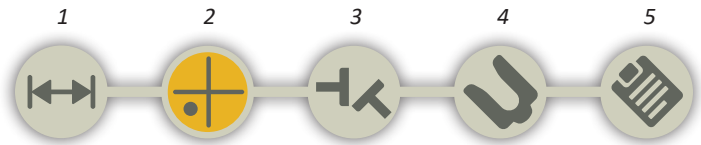
THIS IS EASY ALIGNMENT

HORIZONTAL PROGRAM



The user interface is intuitive and guides you through the measurement process. You can save the measurements of a machine for As found and As left in the same file.

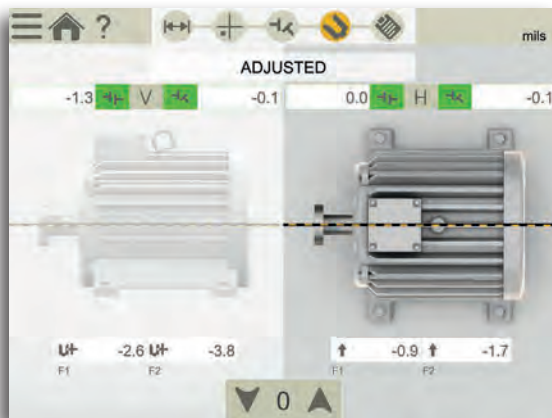
The interactive workflow indicator lets you easily jump to any part in the measurement process.



1. Enter dimensions



2. Measure



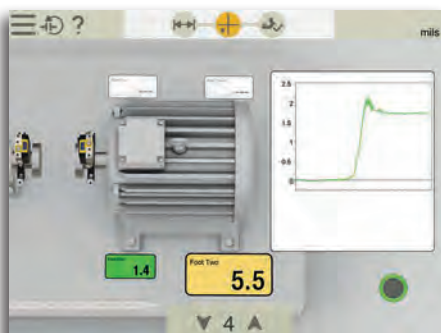
3. View result, As found

4. Adjust, As left



5. Documentation

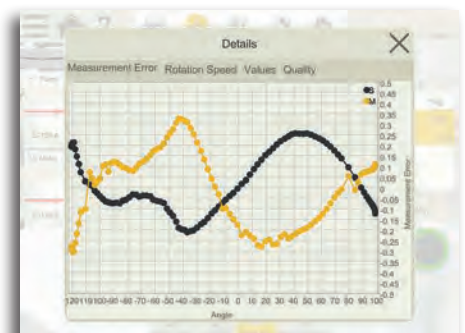
(Send PDF report to USB or by WiFi)



Soft Foot check

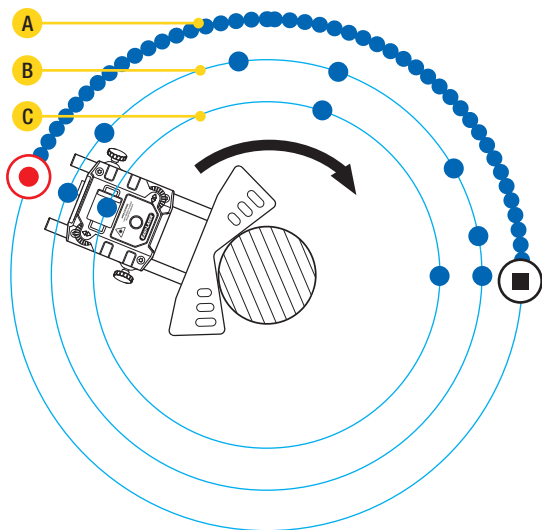


Tolerance check



Quality check view for measurements

MEASUREMENT METHODS



● Measuring points

● Start recording ■ Stop recording



CONTINUOUS SWEEP (A)

Automatic recording of measurement values during continuous sweeping of the shaft. Hundreds of points are registered. You can start anywhere on the turn.



MULTI POINT (B)

Multipoint measurement lets you take readings at any rotational position. Great for uncoupled shafts, hard-to-turn shafts, and high vibration environments.



EASYTURN (C)

The EasyTurn™ function allows you to begin the measurement process from anywhere on the turn. You can turn the shaft to any three positions to register the measurement values.



9-12-3

Measurement points are recorded at fixed points 9, 12 and 3 o'clock.

SMART FUNCTIONS



THERMAL GROWTH

Automatically compensate for thermal expansion of the machines.



SWAP VIEW

Understand adjustment directions more intuitively.



CONTINUE SESSION

Your latest measurement is always available, automatically saved.



MEASUREMENT VALUE FILTER

Improve readings when measuring conditions are poor.



MULTIPLE SETS OF FEET

Align machines with more than two pairs of feet.



BUILT-IN HELP

The app includes a searchable *Users Manual* which opens the relevant chapter depending where in the process you are. This makes it quick and easy to find the answer to your user questions.



Easy-to-access built-in manual

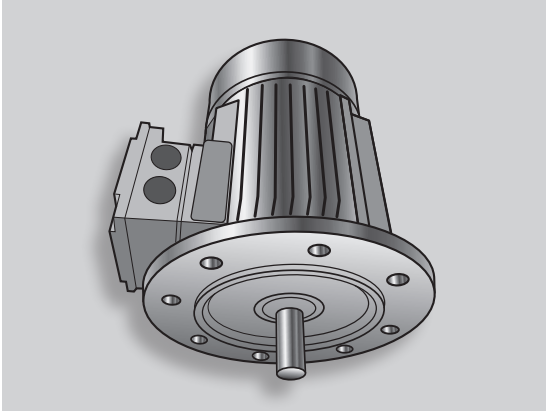
XT660

MORE POSSIBILITIES

VERTICAL/FLANGE MOUNTED MACHINES



For measurement and alignment of vertically and flange mounted machines.

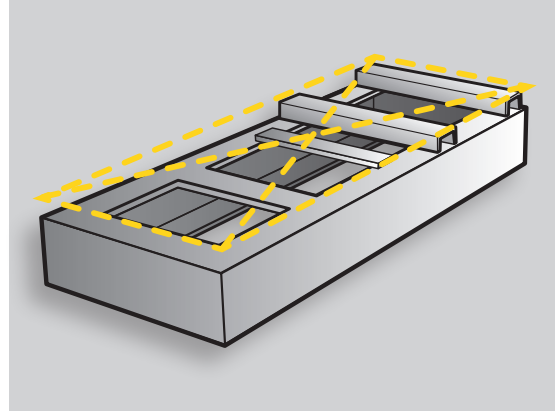


Program for vertically or flange mounted machines

TWIST MEASUREMENT OF MACHINE BASE



The twist measurement program allows you to check the flatness or twist of the machine foundation using only the measuring units in the system.

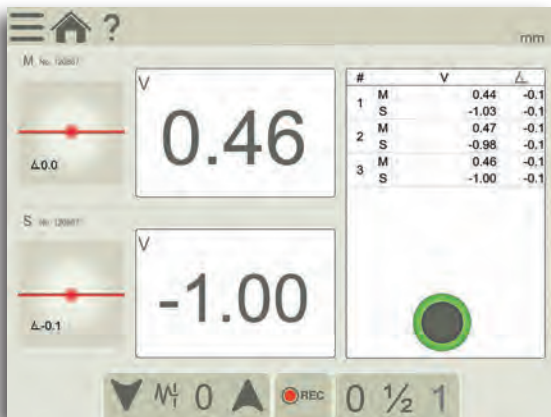


Twist program for checking machine base

VALUES – DIGITAL DIAL INDICATOR

V 0.00
H 0.00

With the Values program you measure as with dial gauges, but with laser precision and the possibility to document the measurement result. It can also be used to "manually" calculate straightness, flatness and dynamic movements of machine components. Automatic recording possible (set the interval and duration).

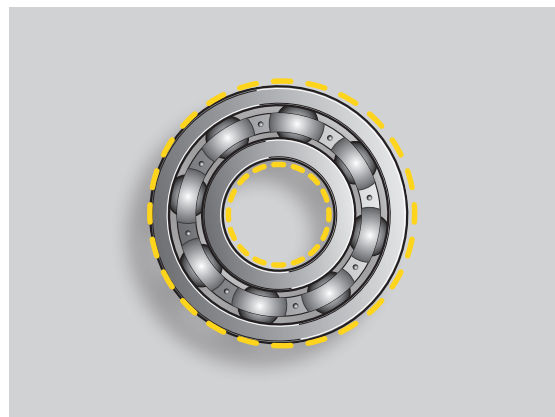


Values from measuring units

CHECK BEARING CLEARANCE



With the Values program you can check bearing clearance or shaft load.



DOCUMENTATION

SAVE!



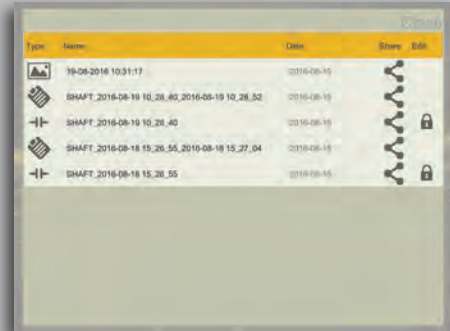
INTERNAL MEMORY

Save your measurement files, photos and reports to the internal memory.



VERSATILE FILE TYPES

Both a PDF and an Excel file are generated.



SHOW!



CUSTOM PDF REPORT TEMPLATES

Use one of the two formats included, or design your own.



ADD NOTES

Explain it a little more.

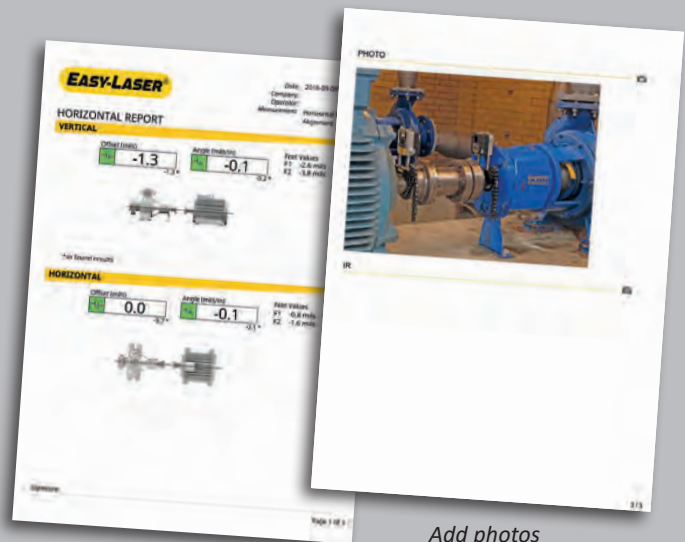


ADD PHOTO

Show what you mean.

ADD THERMAL IMAGE

See the difference after alignment.
(Note: Add-on to the XT11)



Add photos

SHARE!



SEND THE REPORTS

Share the reports via email. Possible on all platforms.



SAVE TO USB

Save your files to USB and copy to other devices.



XT660

SYSTEM PARTS



XT11 DISPLAY UNIT

Rugged, robust, with wear resistant rubberized protective coating. IP66 and 67, dust- water- and shockproof. As standard a 13 MP camera for documentation is built-in, and you can also choose to add an IR camera to the XT11; shoot a thermal image before and after alignment and include with the documentation!

A large 8", glove-enabled touch-screen makes the information clear and the app easy to use. The small OLED display shows battery status of both measuring units and display unit. You can check battery status also when the unit is turned off.

The clever lock-screen button prevents unintentional clicks, for instance when moving around on the job.

Four fastening points for shoulder strap or customized solutions. Heavy-duty battery for very long operating times; up to 16 hours. The camera can be removed if security reasons require it.



GLOVE-ENABLED TOUCH SCREEN

Navigate the screen with or without work gloves.



FLIR® IR CAMERA (A)

Shoot a thermal image before and after alignment and include with the documentation! (Optional)



13 MP CAMERA (B)

Take pictures to identify your machines and include with your report.



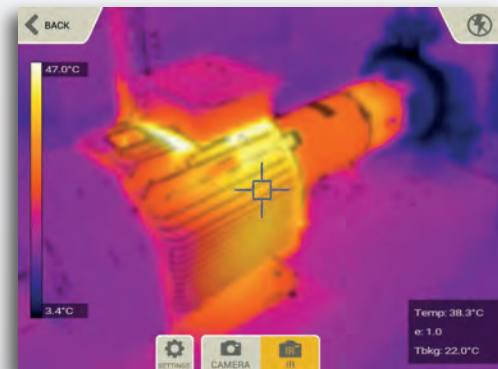
LED LIGHT (C)

Light up the work area when ambient light is not enough.



HDMI VIDEO OUTPUT

Interface with an external video display — ideal to train or present to large groups.





XT60-M/S MEASURING UNITS

The XT60 measuring units have dot-type laser and 1-axis square PSD surfaces. A state-of-the-art OLED display shows the angle of the unit, making it easier to position it on the shaft. The line laser technology provides a fast setup and easy measurement process. The diagonally positioned locking knobs securely lock the unit on the rods. Rigid aluminum housing provide maximum stability. IP66 and 67, dust- water- and shockproof. Heavy-duty battery for very long operating times; up to 24 hours. Built-in Bluetooth wireless technology.

SHAFT BRACKET

The V-bracket is both light yet rigid, with two rods for maximum stability in all directions. Pre-mounted chain for quick setup on the machine.



DOT-TYPE LASER TECHNOLOGY

The dot laser technology makes it possible to measure larger machines and longer spans than line laser systems. It also provides higher accuracy when backlash in the coupling is present. In addition, dot laser allows you to check more things when installing a machine, e.g. twist of foundation and bearing clearance.



DUAL LASERS, PSD, INCLINOMETERS

With electronic inclinometers in both measuring units the system knows exactly how they are positioned. This also makes it very easy to align uncoupled shafts. The so called reversed measurement method with two laser beams and two PSD makes it possible to also measure very incorrectly set machines. This is particularly good for new installations, where the machines are not yet in the correct position. Compared to many other methods, the Dual Technology will retain the measurement accuracy also when distances increase.

XT660

BELT ALIGNMENT TOOL



FOR PULLEY ALIGNMENT



With the Belt alignment tool XT190 BTA you can align most types of radially mounted drives. The transmitter and detector attaches magnetically to the sheave edge. A digital display unit gives the advantage of checking against belt manufacturer tolerances. When connected to the *XT Alignment App* on your iOS or Android device*, or the XT11, you can also read off the alignment “live” at the position on the machine where the actual alignment is made. You get adjustment values for both horizontal and vertical direction (shim value), resulting in a more accurate alignment in a shorter time. The XT190 is the perfect addition to your XT660 system, but you can also use it as a separate tool, with or without a separate display device.

SYSTEM XT190 BTA, PART NO. 12-1053



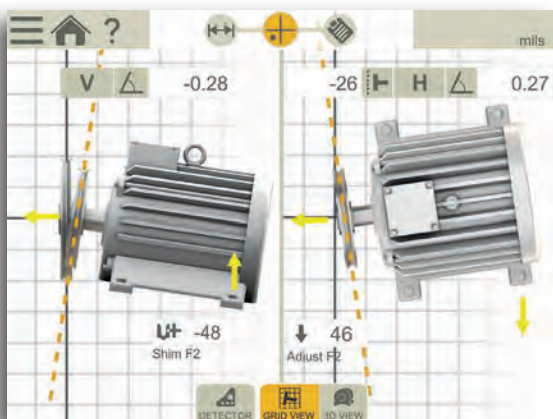
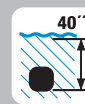
*Conditions apply

RUGGED DESIGN



IP66 AND IP67 APPROVED

Easy-Laser® XT is waterproof, dustproof and shockproof. The units have been tested and approved to an Ingress Protection rating of IP66 and IP67, which means that they are dustproof and waterproof to a depth of 1 meter, and also protected against powerful water jets.



Align machine in live mode, document result with PDF.
(XT Alignment app Belt application.)



You can also view the alignment in 3D.



(Note: Photo shows XT40 measuring units.)

0.15 "
 0.35 °H
 0.45 °V

OLED display on detector unit. Live values.

XT660

EASY-LASER® GENERATION XT

The age of measurement independence is here!**Android****iOS**

App for multiple platforms
Maximum flexibility
No Lock-ins

**NO LOCK-INS**

With Generation XT you decide if you want the rugged and user-friendly Easy-Laser® XT11 display unit to be included or not. The app also runs on your iOS or Android device*, be it a tablet or a phone, meaning you are never locked in to a specific way of working.

**SAME INTERFACE**

Purchase multiple systems with various capabilities, train once! The training costs are minimized significantly since the app interface and basic functionality is identical for all systems (XT660/ XT440/XT190).

*Conditions apply

Easy-Laser® is manufactured by Easy-Laser AB, Alfagatan 6, SE-431 49 Mölndal, Sweden
Tel +46 31 708 63 00, Fax +46 31 708 63 50, e-mail: info@easylaser.com, www.easylaser.com
© 2017 Easy-Laser AB. We reserve the right to make changes without prior notification.
Easy-Laser® is a registered trademark of Easy-Laser AB. Android, Google Play, and the Google Play logo are trademarks of Google Inc. Apple, the Apple logo, iPhone, and iPod touch are trademarks of Apple Inc., registered in the U.S. and other countries. App Store is a service mark of Apple Inc. Other trademarks belong to their respective owners. This product complies with: EN60825-1, 21 CFR 1040.10 and 1040.11. Contains FCC ID: Q0QBGM111, IC: 5123A-BGM111 and FCC ID: PPD-QCA6234, IC: 4104A-QCA6234. Documentation ID: 05-0884 Rev1

**LUDECA**

Keep it running.

LUDECA Inc.
1425 N.W. 88th Avenue
Doral, FL 33172
Phone: (305) 591-8935
Fax: (305) 591-1537
info@ludeca.com
www.ludeca.com