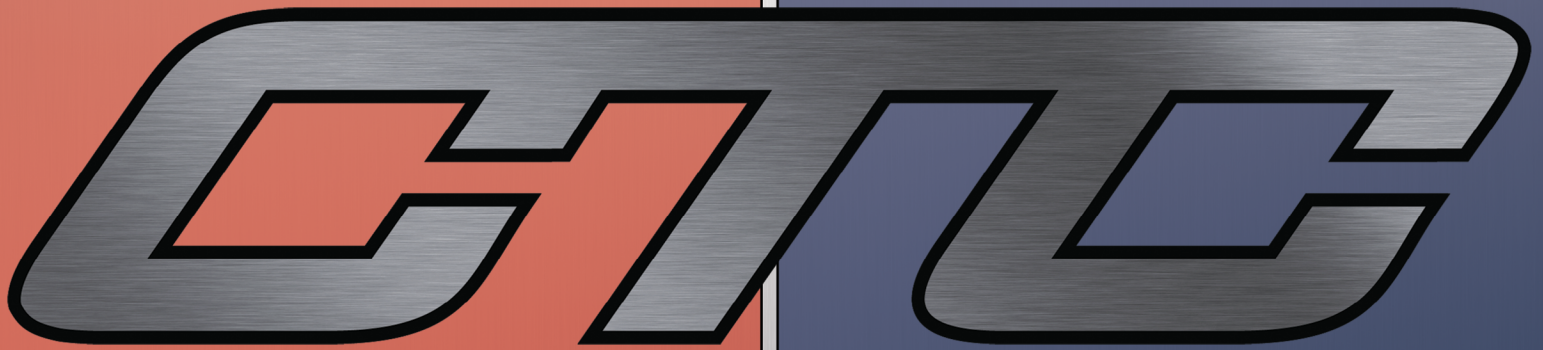


# SHORT FORM CATALOG



INDUSTRIAL  
MONITORING

VIBRATION  
SOLUTIONS



VIBRATION ANALYSIS HARDWARE



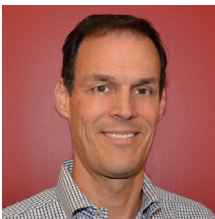
PROTECTION & RELIABILITY INSTRUMENTS

## Who We Are

At CTC, we are a family-owned and operated business passionate about providing the best quality products backed by excellent customer service. We are the industry leader in quick delivery for stock and built-to-order products. All CTC products are proudly made or assembled in the U.S.A. We always honor our best-in-class warranties, and our customer service seeks to provide the best customer experience in the world.

## What We Do

CTC is the world leader in the design and manufacture of industrial accelerometers, piezo velocity transducers, 4-20 mA vibration sensors, and proximity probes as well as all related mounting hardware, cabling, and junction boxes. Our products enable efficient vibration monitoring for predictive maintenance in a wide variety of industries. Industries served include cement, mining, petrochemical, food & beverage, auto, steel, wind, paper, power generation, water & wastewater treatment, pharmaceutical, hospitals, bottling, and more. Our mission is to offer the most extensive collection of accelerometers and vibration analysis hardware products, as well as the tools for installation. Our products are compatible with multiple third-party data collectors and online monitoring systems.



A black ink signature of Todd Cook.

**TODD  
COOK**

Co-Owner



A black ink signature of Laura Cook.

**LAURA  
COOK**

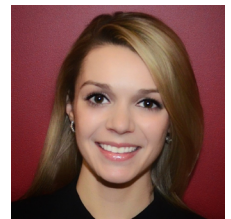
Co-Owner



A black ink signature of Andrew Cook.

**ANDREW  
COOK**

Director of Sales



A black ink signature of Charlotte Cook.

**CHARLOTTE  
COOK**

Director of Marketing

# CONTENTS

<b>CTC .....</b>	<b>4</b>
Multipurpose Accelerometers.....	4
Ultrasound Sensor .....	5
High-Temperature Accelerometers .....	5
Wind Turbine Accelerometers .....	6
Hazardous Rated Accelerometers .....	7
Temperature & Vibration Sensors .....	7
Triaxial Accelerometers.....	8
Cables.....	9
Connectors.....	10
Adapters & Accessories .....	12
Junction Boxes.....	14
Mounting Hardware .....	16
<b>PRO .....</b>	<b>19</b>
4-20 mA .....	19
Signal Conditioners .....	20
Proximity Probes.....	21
Wireless Vibration Transmitter .....	22
Molded Accelerometers .....	22



VIBRATION ANALYSIS HARDWARE



PROTECTION & RELIABILITY INSTRUMENTS

## Product Offerings

At CTC, we offer two comprehensive product lines to meet your industrial vibration monitoring needs. Our products reflect the input from customers and distributors around the world and are designed and tested to meet the real-world demands of plant environments. We believe our products are the highest quality on the market, which is why we back each product line with our best-in-class warranties.



The CTC product line features vibration analysis hardware for heavy industry.

All CTC products are backed by our unconditional lifetime warranty. If any CTC product should ever fail, we will repair or replace it at no charge.



The PRO line offers 4-20 mA vibration monitoring solutions and proximity probes.

All PRO products are backed by a lifetime warranty on materials and workmanship. PRO will repair or replace any of our products as long as the product was not subjected to misuse, neglect, natural disasters, improper installation, or modification.

## Refund Policy

All stock products qualify for a full refund if returned in new condition within 90 days of shipment. Built-to-order products qualify for a 50% refund if returned in original condition within 90 days of delivery. Custom products are quoted and built specifically to the requirements of the customer, which may include completely custom product designs or private-labeled versions of standard products for OEM customers. Custom products ordered are non-cancellable, non-returnable, and non-refundable.



CTC offers a complete line of industrial accelerometers. Our ruggedized industrial accelerometers are available in single axis, biaxial, and triaxial designs. Many configurations allow for either top or side exit options. Side exit configurations are suitable for installations in areas where height is an issue. CTC's industrial accelerometers support a diverse set of applications with sensitivity values ranging from 10 mV/g to 1000 mV/g. Dual output configurations allow for vibration and temperature outputs.

### Multipurpose Accelerometer, Top Exit



**STANDARD SIZE**



**COMPACT SIZE**



**MINI SIZE**

---

### Multipurpose Accelerometer, Side Exit



**STANDARD SIZE**



**COMPACT SIZE**



**MINI SIZE**



Backed by our Unconditional Lifetime Warranty!

## ACCELEROMETERS

### Multipurpose Accelerometer, Integral Cable Options



**STANDARD  
INTEGRAL**



**ARMORED  
INTEGRAL**

## ULTRASOUND

### Ultrasound Sensor



Sensitivity: 100 mV/g  
Resonant Peak: 44 kHz

#### UEB330

High frequency ultrasound sensor with high amplitude resonance peak for stress wave measurement techniques and IEPE amplifier technology.

## HIGH-TEMPERATURE

### High-Temperature Accelerometers



**AC207**  
100 mV/g  
Max Temp: 325° F (162° C)



**AC208**  
100 mV/g  
Max Temp: 325° F (162° C)



**CM362-7A**  
50, 100 mV/g  
100 mV/in/sec  
Max Temp: 650° F (343° C)



Backed by our Unconditional Lifetime Warranty!

Power generation is a critical need in today's world. Uptime is the primary concern, and to maintain power generation, the machines need to be running. CTC's goal is to improve reliability with permanently mounted accelerometers to monitor wind turbine vibration and provide early detection for potential failure. CTC has multiple options to fit your specific application. Low-frequency accelerometers are ideal for main bearing and other slow-speed applications. Our multipurpose accelerometers are best suited for gearboxes and generators.

### Accelerometers for Wind Turbine Applications



#### **WT135**

Low frequency wind  
turbine accelerometer  
500 mV/g



#### **WT136**

Low frequency wind  
turbine accelerometer  
500 mV/g

---

### Molded Accelerometer



#### **MEB212**

Lightweight molded accelerometer  
5 kVAC protection  
100 mV/g  
10 ft integral cable



Backed by our Unconditional Lifetime Warranty!

## HAZARDOUS RATED

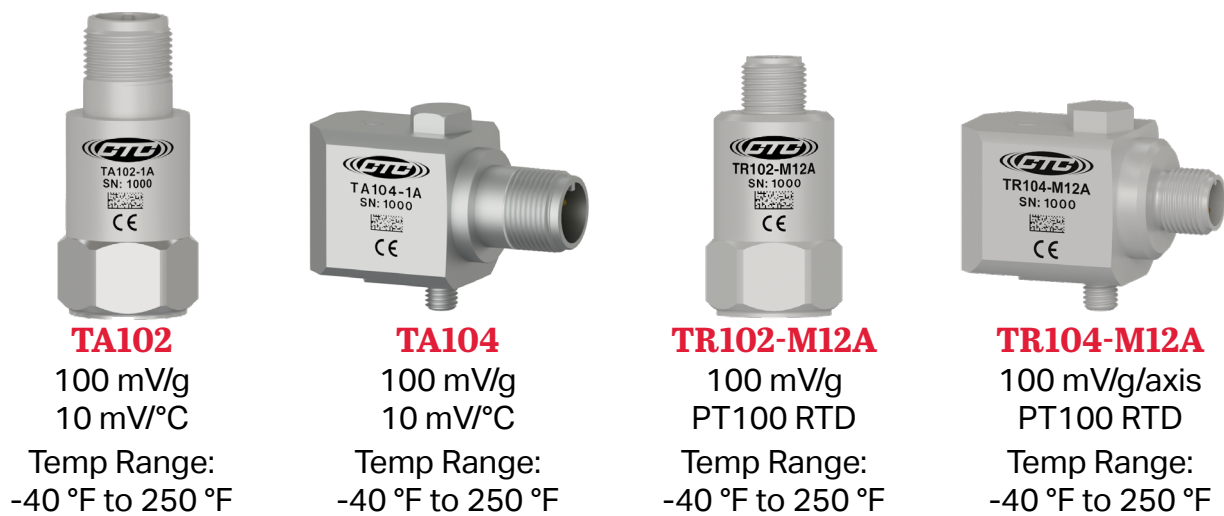
### Hazardous Rated Accelerometers

CTC offers a variety of single axis, biaxial, triaxial, dual output, and low capacitance sensors certified for Class I Division 2 (ATEX/IECEX Zone 2), as well as intrinsically safe protection methods under Class 1 Division 1 (ATEX/IECEX Zone 0/1).



## TEMPERATURE & VIBRATION

### Dual Output Temperature and Vibration Sensors



Backed by our Unconditional Lifetime Warranty!



## TREA330 Triaxial Accelerometers



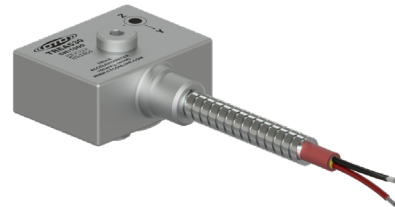
**SIDE EXIT**

100 mV/g



**INTEGRAL**

100 mV/g



**ARMORED  
INTEGRAL**

100 mV/g

## Other Popular Triaxial Accelerometers



**AC115**

Low cost 4 pin  
100 mV/g



**AC119**

Biaxial with X & Z axis  
100 mV/g



**AC155**

Low cost 4 pin  
Modal/ODS  
100 mV/g



**AC230**

Premium 4 pin  
100 mV/g



**AC360**

Modal/ODS  
100 mV/g



**AC365**

Modal/ODS  
100 mV/g



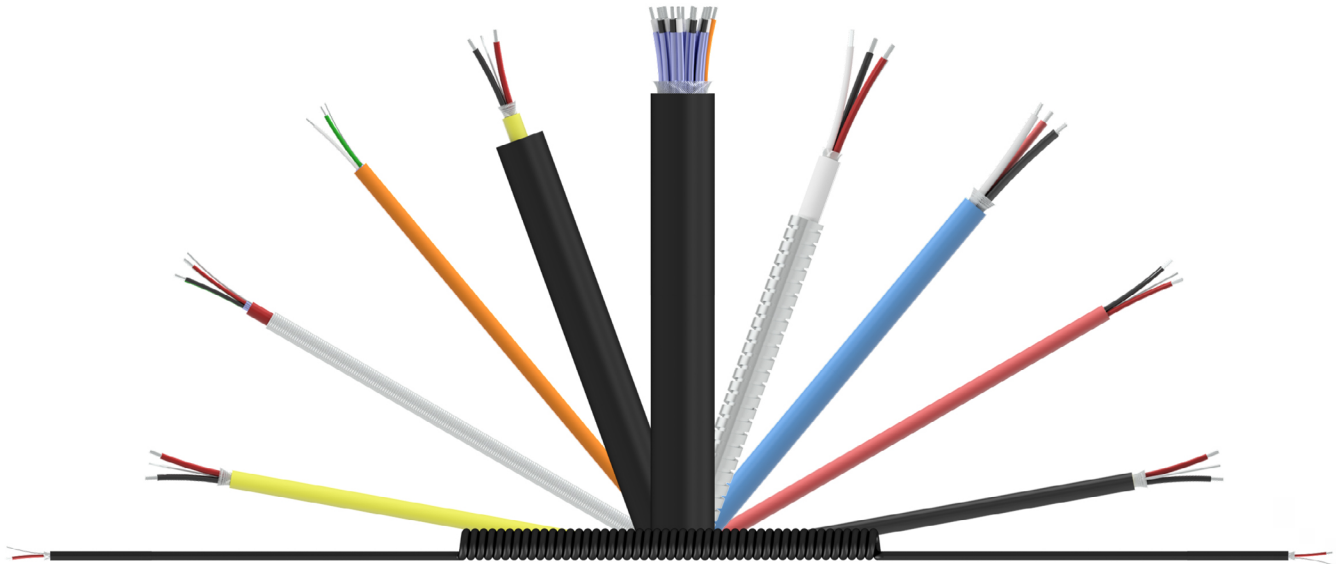
**TRCA330**

Compact 4 pin  
10 mV/g



Backed by our Unconditional Lifetime Warranty!

### CTC Offers a Variety of Cable Options for All Application and Environmental Criteria



#### JACKET TYPES

- Fluorinated ethylene propylene (FEP)
- Polyurethane
- Lightweight Polyurethane
- PVC
- Thermoplastic Elastomer (TPE)
- Low Smoke Zero Halogen

#### ARMOR OPTIONS

- Stainless Steel Braided Sheathing
- Stainless Steel Armor
- Hydraulic Hose Armor

#### CONDUCTOR OPTIONS

- 2 Conductor
- 3 Conductor
- 4 Conductor
- 6 Conductor
- 8 Pair Multi Conductor
- 12 Pair Multi Conductor
- 16 Pair Multi Conductor
- 12 Triad Multi Conductor

#### HAZARDOUS ZONE OPTIONS

Class 1 Division 2 approved cables



Backed by our Unconditional Lifetime Warranty!

## CTC Offers a Variety of Standard and Specialty Connectors for Every Possible Application

CTC sensor connectors support temperatures ranging from -58 ° F to 325 ° F (-58 °C to 163 °C). A wide selection of connectors supporting IP (Ingress Protection) ranging from IP66 to IP68 is available.

### A SERIES: 2 OR 3 SOCKET MIL STYLE (C-5015) COMPATIBLE CONNECTOR



Connector options

- Standard
- Right angle
- Hydraulic hose

Material options

- Polycarbonate
- Polyurethane
- Nylon
- Polyphenylene sulfide (PPS)

### D SERIES: 2 OR 3 SOCKET MIL STYLE (C-5015) COMPATIBLE CONNECTOR



Connector options

- Standard
- Grounded to sensor case
- Right angle
- Backshell
- Backshell for Class 1 Division 2
- Molded strain relief
- Bending strain relief

Material options

- Polyurethane

### J SERIES: 2 OR 4 SOCKET MINI-MIL CONNECTOR



Connector options

- Standard
- Strain relief
- Class 1 Division 2 rated

Material options

- Polycarbonate
- Nylon
- Polyurethane

### M SERIES: 5 SOCKET M12 MOLDED CONNECTOR



Connector options

- Available in 2, 3, 4, and 5 live pin configurations

Material options

- Nylon
- Polycarbonate
- Polyurethane

### V SERIES: VITON BOOT



Connector options

- Available in 2 or 3 live pin configurations

Material options

- Viton seal with
  - Nylon insert option
  - PPS insert option

Many other connector options are available. Please [visit our website](#) for more details.



Backed by our Unconditional Lifetime Warranty!

### Data Collector Cord Sets

CTC offers a variety of OEM replacement data collector cables and portable cable options for all major vibration analyzer manufacturers. Data collector cables are available in both coiled and straight cable options. Replacement cable assembly and adapters are available for every major data collector including: ACOEM, ADASH Ltd, GE/Commtest, Azima/DLI, Emerson/CSI, Erbesid, Pruftechnik, Rockwell/Entek, Schenck Trebel, SDT, SEMAPI, SKF, and SPM.

### Popular Data Collector Connectors



#### **EMERSON/CSI C555**

Channel A acceleration  
input to CSI 2130 & 2140



#### **SKF C66**

Channel A input for  
CMXA50, 70, 75 & 80



#### **ACOEM C494**

Single channel input for  
Falcon data collectors



#### **PRUFTECHNIK C618**

Single channel input to  
VIBXpert II



#### **ROCKWELL/ENTEK C22**

Single channel input for  
dataPAC & enPAC



#### **GE/COMMTEST C416**

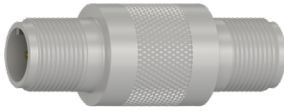
Triaxial input X, Y and Z for  
vb6 & vb8



Backed by our Unconditional Lifetime Warranty!

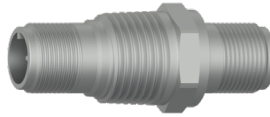


### Popular Adapters



#### **CB901-1A**

2 pin MIL to 2 pin MIL  
in-line feed thru



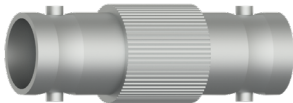
#### **CB903-1A**

2 pin MIL to 2 pin MIL  
bulk head feed-thru,  
1/2-NPT



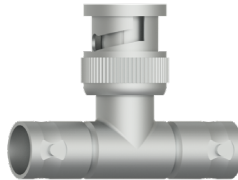
#### **CB908-1A**

2 pin MIL to BNC plug  
adapter with molded  
reinforcement



#### **CB910-1A**

In-line BNC jack to  
BNC jack adapter



#### **CB911-1A**

BNC tee adapter



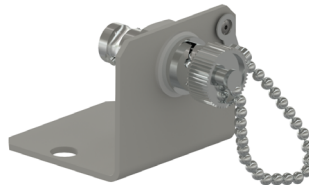
#### **CB911-3A**

In-line BNC plug to  
BNC plug adapter



#### **CB912-1A**

2 socket MIL to BNC  
plug adapter



#### **CB917-1A**

BNC jack feed-thru  
connector with  
mounting bracket



#### **EMPP**

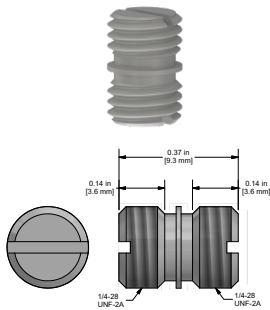
BNC jack  
measurement point  
with protective cover



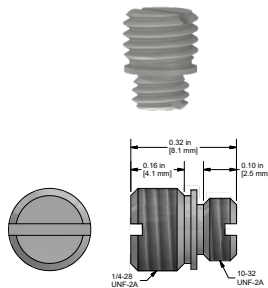
Backed by our Unconditional Lifetime Warranty!

## ADAPTERS & ACCESSORIES

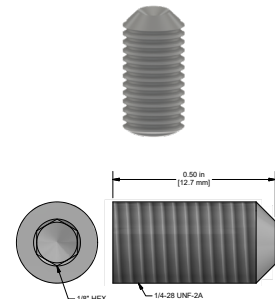
### Specialty Mounting Adapters & Studs



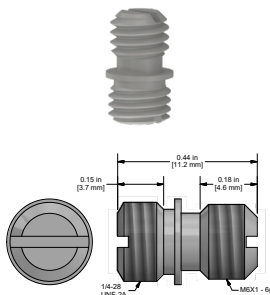
**MH108-1B**  
1/4-28 to 1/4-28  
mounting stud  
stainless steel



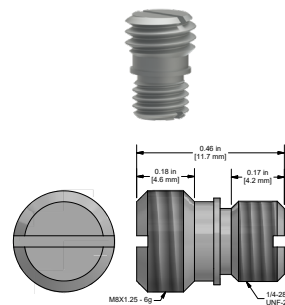
**MH108-3B**  
1/4-28 to 10-32  
adapter stud  
stainless steel



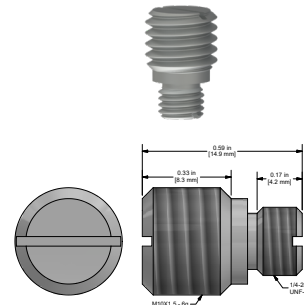
**MH108-4B**  
1/4-28 set screw  
1/2 in. length  
stainless steel



**MH108-5B**  
1/4-28 to M6x1  
adapter stud  
stainless steel

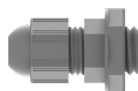


**MH108-6B**  
1/4-28 to M8  
adapter stud  
stainless steel

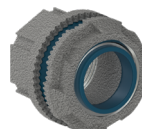


**MH108-7B**  
1/4-28 to M10  
adapter stud  
stainless steel

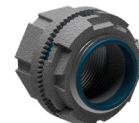
### Junction Box Accessories



**JB903-1A**  
Cord grip for use with  
cable diameter  
0.118 in. - 0.256 in.



**JB938-1A**  
1 in. rigid body  
conduit fitting



**JB938-2A**  
1 1/4 in. rigid body  
conduit fitting



Backed by our Unconditional Lifetime Warranty!

At CTC, we offer the widest variety of junction boxes in the world. Our junction box solutions allow for the monitoring of remotely mounted vibration sensors, which would be otherwise restricted to human access due to safety considerations. Also offered is a selection of low-cost cable termination boxes that allow multiple measurement points to be routed to a single location to gather data. Many CTC junction boxes offer continuous output options for direct interface to online monitoring systems.

### iBox Series

Fully featured NEMA 4X (IP66) rated vibration junction box with IEPE sensor condition indicator lights and convenient interface with fold-forward panel for easy wiring.



#### **JB100/JB200**

Allows for up to 12 channels for single axis, biaxial, or triaxial outputs



#### **JB100 - 24-48 Channel**

Available in 24, 36, or 48 channels



#### **JB300 SLOPE TOP**

Available in 4, 6, 8, 10, or 12 channels

---

### Switch Boxes



#### **SB102/SB202**

Fiberglass or stainless steel switch boxes available in 4, 6, 8, 10, or 12 channels



#### **SB142/SB242**

Fiberglass or stainless steel switch boxes for dual output available in 4, 6, or 8 channels



#### **SSB-MODX**

12 channel DIN rail mountable switch module subassembly



Backed by our Unconditional Lifetime Warranty!

### Cable Termination and MAXX Boxes



#### **CT101**

Cable termination boxes for up to 4 channels



#### **MMX-MOD3**

DIN rail mountable module for up to 3 channels



#### **MX102/MX202**

Fiberglass or stainless steel MAXX boxes available in 1-12 channels



#### **MX502**

Aluminum Mini-MAXX boxes available in up to 4 channels

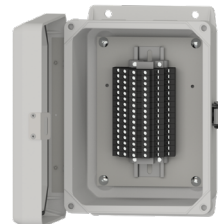
---

### Cable Reduction Boxes



#### **CR102/CR202**

Fiberglass or stainless steel cable reduction boxes for 8, 12, and 16 channels  
-58 °F to 180 °F  
(-50 °C to 82 °C)



#### **CRHT102/CRHT202**

Fiberglass or stainless steel high temperature  
(-40 °F to 212 °F/  
-40 °C to 100 °C)  
cable reduction boxes for 12 and 16 channels



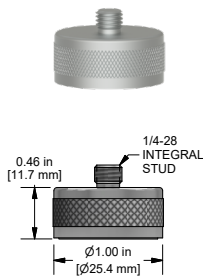
Backed by our Unconditional Lifetime Warranty!



CTC offers a variety of adhesive and stud mounted sensor mounting pads. Magnet mounting pad options for portable field applications are also available, including flat and two rail mounting configurations. Additionally, we offer specialty mounting accessories for fin-cooled motors as well as a variety of extension adapters, which allow access to traditionally hard-to-reach bearing locations. Visit our website for a complete list of our mounting hardware solutions.

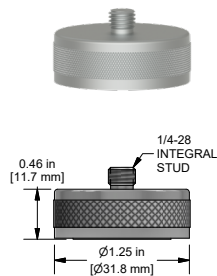
## Rare Earth Magnetic Bases

made from Neodymium Iron Boron



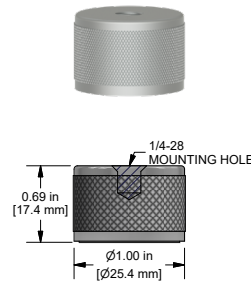
**MH103-1B**

Flat surface  
pull strength:  
40lbs/18kg



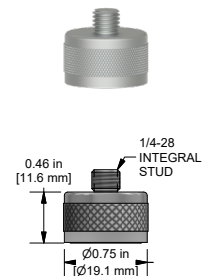
**MH104-1B**

Flat surface  
pull strength:  
60lbs/27kg



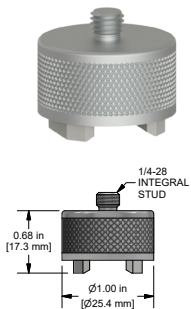
**MH122-1A**

Flat surface  
pull strength:  
40lbs/18kg



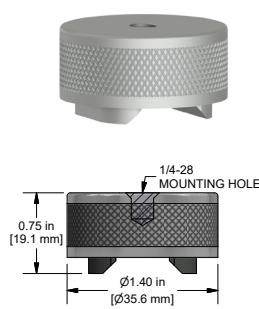
**MH136-1A**

Flat surface  
pull strength:  
25lbs/11kg



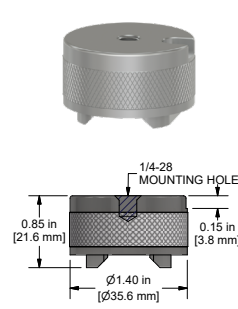
**MH112-1A**

Multipurpose  
pull strength:  
30lbs/14kg



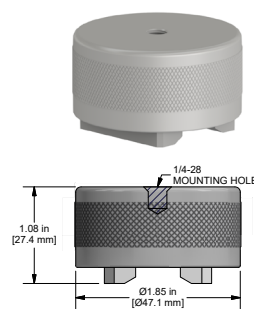
**MH114-3A**

Multipurpose  
pull strength:  
50lbs/23kg



**MH114-3T**

Multipurpose  
pull strength:  
50lbs/23kg



**MH115-2A**

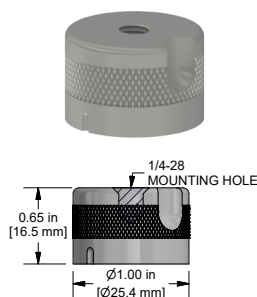
Multipurpose  
pull strength:  
95lbs/43kg



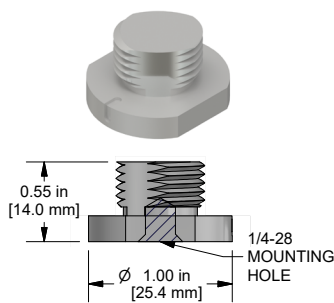
Backed by our Unconditional Lifetime Warranty!

# MOUNTING HARDWARE

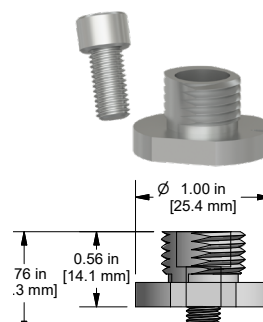
## Accelerometer Quick Disconnects



**MH107-1A**

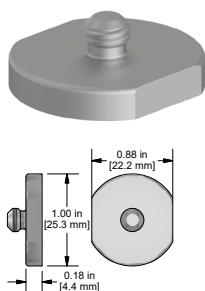


**MH107-1B**

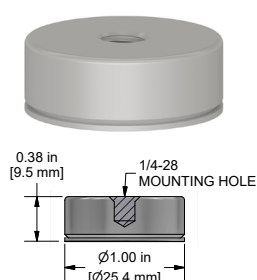


**MH107-2B**

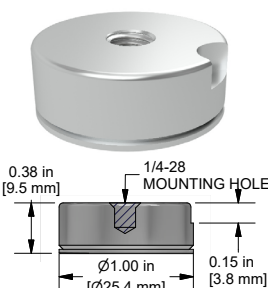
## Mounting Pads/Magnet Targets



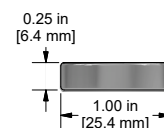
**MH101-1B**



**MH130-1A**

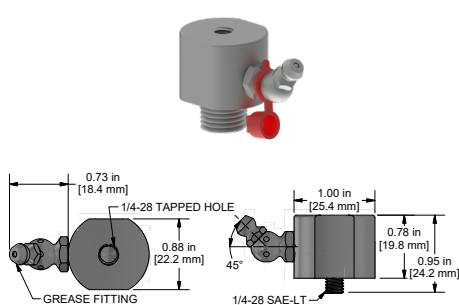


**MH130-1T**



**MH133-1A**

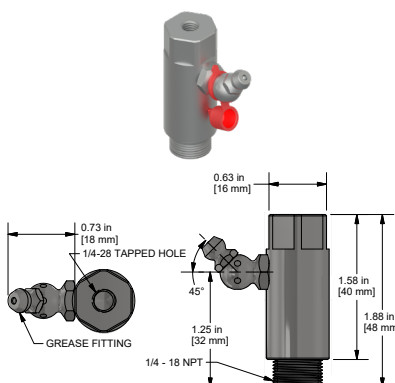
## Zerk and Specialty Mounting Adapters



**MH134**

Zerk Adapter

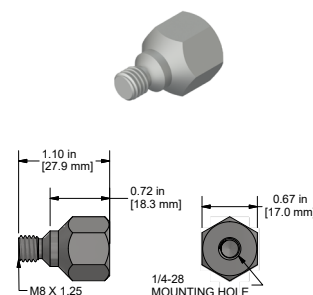
Available mounting threads:  
1/4 NPT, 1/8 NPT



**MH134-4B**

Zerk Adapter

Available mounting threads:  
1/4 NPT

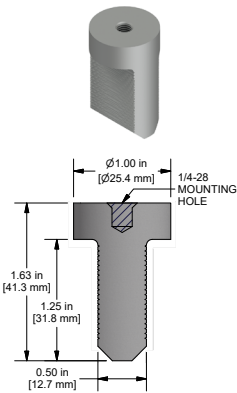


**MH143-1A**

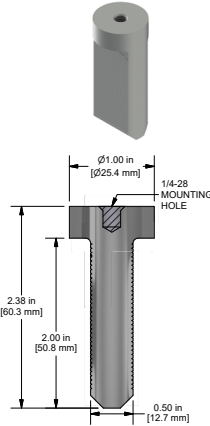
Hex head mounting stud  
for accelerometers  
SPM Compatible

## Motor Fin Probe Pads

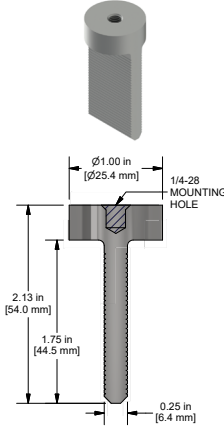
Take measurements from hard-to-reach places.



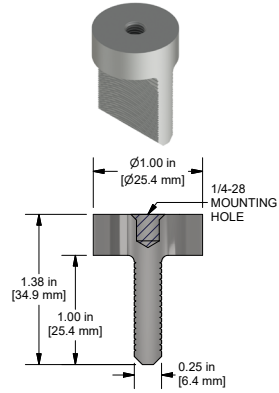
**MH118-1A**



**MH118-2A**



**MH118-3A**



**MH118-4A**

Our fin mount probes are perfect for narrow measurement points in motors, turbines, and other machinery. Fin mounts can be used for portable route measurements or permanently mounted accelerometers.

## Accelerometer Installation Tool Kit



### MH117 SERIES

Spot face and pilot hole drill in one operation.  
Option for taps and ratcheting tap handle included.

### High speed steel end mill tool kits

Available thread sizes	Available end mill diameters
1/4-28	5/8 in., 1 in., 1 1/4 in.
10-32	5/8 in., 1 in.
M5x.8	5/8 in.
M6x1	1 in., 1 1/4 in.
M8x1.25	1 1/4 in.

### Carbide tipped end mill tool kits

Available thread sizes	Available end mill diameters
1/4-28	5/8 in., 1 in., 1 1/4 in.
M8x1.25	1 1/4 in.



Backed by our Unconditional Lifetime Warranty!

CTC offers a wide array of 4-20 mA output solutions for industrial applications. CTC's standard 4-20 mA loop-powered vibration sensors are available with velocity as well as acceleration output measurement options. CTC's loop-powered sensor line also includes a dual output option, with both 4-20 mA output and dynamic output configurations in one sensor. Other options include 24 VDC powered transmitters that power standard IEPE accelerometers and convert the vibration to a powered 4-20 mA signal. These transmitters also offer a 4-20 mA output for temperature when coupled with CTC dual output vibration and temperature sensors.

### Velocity & Acceleration

LP200 Series sensors for velocity and LP300 Series sensors for acceleration come in top or side exit connector, integral cable, and armored integral cable options. LP400 Series sensors for dual output come in top, integral, and armored integral exit options.

#### LP200

Velocity  
output



TOP EXIT

#### LP300

Acceleration  
output



TOP EXIT

#### LP400

Dual output



TOP EXIT



SIDE EXIT



SIDE EXIT



INTEGRAL OPTIONS



Backed by our Best-in-Class Warranty!





### SC300 SERIES

USB configurable,  
dual channel vibration  
plus temperature



### SC900 SERIES

Class 1, Division 2  
approved, 4-20 mA  
vibration transmitters

## Signal Conditioner Enclosures

CTC's Signal Conditioner Enclosures are turnkey solutions, which come fully populated with signal conditioners, power supply, and terminal blocks for sensor terminations. The signal conditioners are available pre-configured based on customer-specific requirements. Terminal blocks are provided for easy sensor terminations. These terminal blocks are pre-wired to the signal conditioners, and the outputs from the signal conditioners are wired to terminal blocks for integration into PLC/DCS systems.



### XE151

1-12 channel  
enclosure



### MVR1000

1-4 channel  
enclosure



### XE550 SERIES

1-8 channel  
enclosure with up  
to 16 total IP based  
outputs



Backed by our Best-in-Class Warranty!

## PROXIMITY PROBES

CTC offers a complete line of proximity probe systems designed and built to endure the harshest industrial environments. Proximity probes systems are available with probe tip sizes in 5mm FFV, 8mm, 11mm, and 25mm diameters. The variety of probe sizes offered allows accurate and precise machinery measurements for applications involving radial dynamic, axial rotor position, and thermal case expansion measurements.



### PROBE TIP OPTIONS

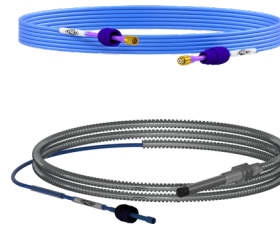
5mm FFV, 8mm, 11mm, 25mm

Standard and armor cable options available

## Complete Your Prox Probe Assembly



**DRIVERS**



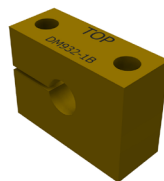
**EXTENSION  
CABLES**

## Proximity Probe Accessories



### ENCLOSURES

Fiberglass and stainless steel enclosures  
1-6 channels  
Powered and 4-20 mA options available



### MOUNTING BLOCKS



### REVERSE MOUNT HOUSING



Backed by our Best-in-Class Warranty!

## Wireless Vibration Transmitter



### WA100-BT

Bluetooth® Low Energy 5.0

Compatible with AC312/AC314 low power accelerometers

Captures a dynamic signal at a user specified sampling rate for a user specified sample time

Estimated 5+ years of battery life when taking 2 or fewer scheduled measurements daily

User configurable 1 - 40ks/sec,  
F-max = 15,652 Hz ((40ks/s) / 2.56)

Completely customizable monitoring software —  
No subscription required

## MOLDED ACCELEROMETERS

### Lightweight Molded Accelerometer



#### MCB211

High frequency  
10 mV/g



#### MDB211

High frequency  
50 mV/g



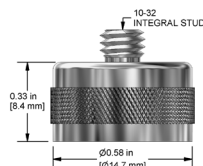
#### MEB210

General purpose  
100 mV/g



#### MEB211

High frequency  
100 mV/g



### SUGGESTED MOUNTING HARDWARE

MH154-1B  
Flat surface  
pull strength:  
15lbs/7kg



Backed by our Best-in-Class Warranty!

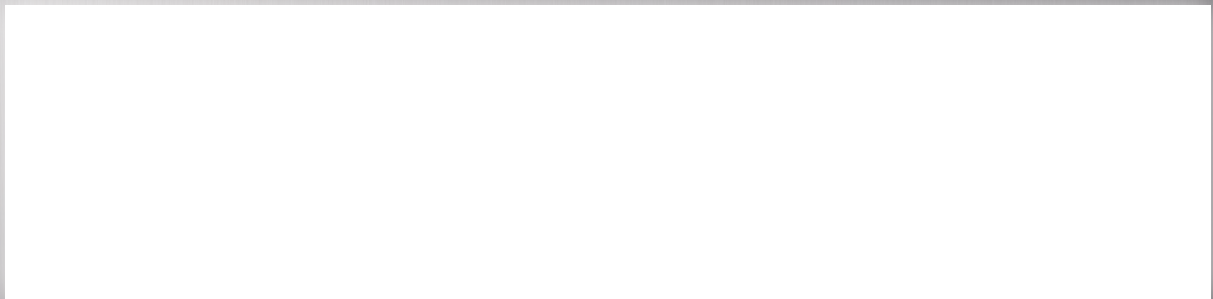




VIBRATION ANALYSIS HARDWARE



PROTECTION & RELIABILITY INSTRUMENTS



WHEN RELIABILITY MATTERS  
CONNECT TO CONFIDENCE